



GMT MONTHLY MEMBERSHIP PROGRESS REPORT

Results as of: 6/30/2019

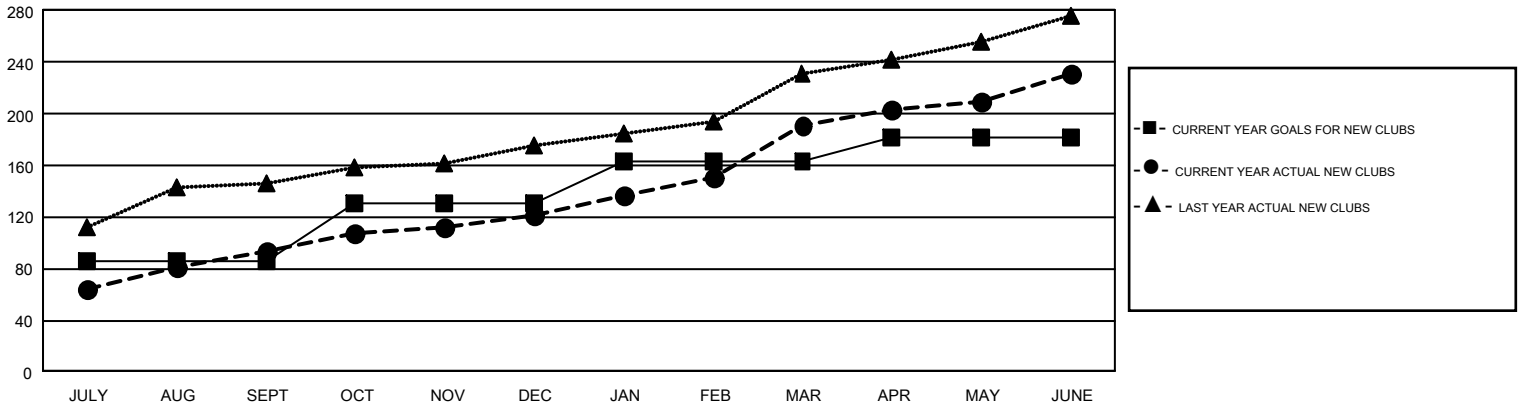
GMT Constitutional Area 6, Group A

GMT: SWADESH RANJAN SAHA

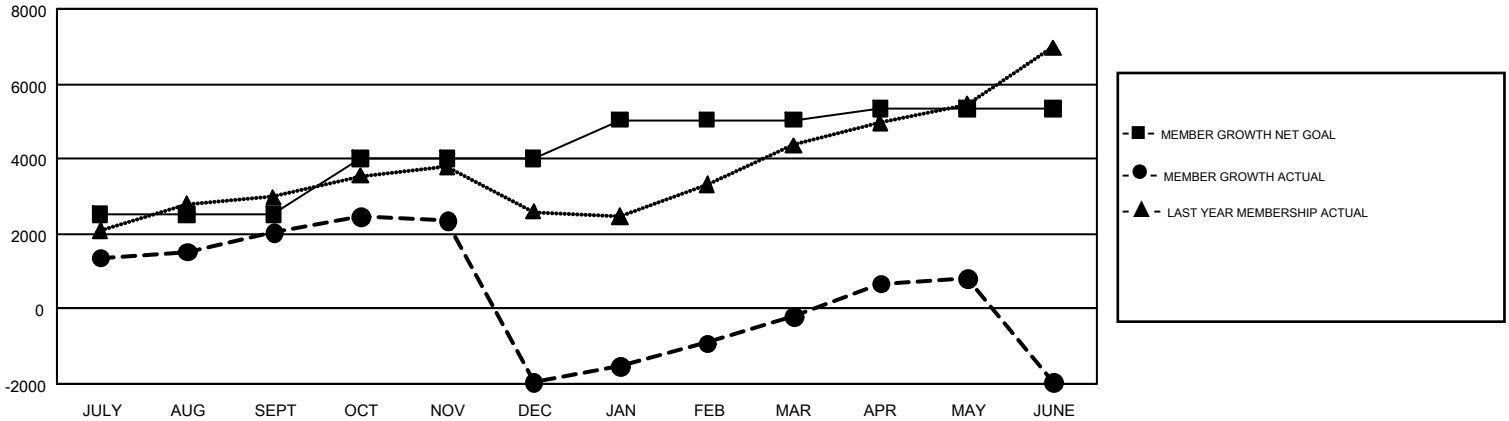
REPORT DOES NOT INCLUDE CLUBS IN UNDISTRICTED AREAS.

Clubs				Members			
RESULTS FOR 2018-2019				RESULTS FOR 2018-2019			
QUARTER	NEW CLUB GOAL	NEW CLUBS	DROPPED CLUBS	QUARTER	MEMBER GROWTH NET GOAL	MEMBER GROWTH ACTUAL	DROPPED MEMBERS ACTUAL (including transfers)
JULY/AUG/SEPT	86	94	22	JULY/AUG/SEPT	2,525	3,850	1,649
OCT/NOV/DEC	45	27	106	OCT/NOV/DEC	1,470	2,240	6,139
JAN/FEB/MAR	32	70	19	JAN/FEB/MAR	1,044	3,123	951
APR/MAY/JUNE	18	40	88	APR/MAY/JUNE	300	4,570	5,771

GOALS AND ACTUAL NEW CLUBS CUMULATIVE



GOALS AND ACTUAL MEMBERS CUMULATIVE



DROPPED CLUBS: 235	1,136 CLUBS OF 1,894 ADDED 1 OR MORE NEW MEMBERS	<u>GENDER DISTRIBUTION</u>
<u>DROPPED MEMBERS</u>	CLICK HERE FOR CUMULATIVE MEMBERSHIP DATA	MALE 40,951 (72.13%)
DECEASED 140		FEMALE 15,821 (27.87%)
CLUB CANCELLED 6,088		TOTAL FAMILY UNIT MEMBERS 25,683
OTHER 8,283		FAMILY MEMBERS PAYING HALF DUES 15,710
TOTAL 14,511		